

Setting TLS Encryption Protocol in Your Browser

As part of Intermedix EMSystems' ongoing commitment to safeguarding protected health information (PHI), effective January 1, 2011, we will be enforcing Transport Layer Security (TLS) encryption protocols on our websites and web-based applications and disabling the ability to access websites using a browser that is not TLS-compatible. TLS is the only protocol that meets the HIPAA HITECH Safe Harbor qualification for browser-based data requests.

For most of our clients, this change will be transparent as current releases of web browsers support TLS encryption. However, there may be a small number who still use older web browsers.

Check with your IT Department to determine the version of web browser(s) your organization is currently using and share this information with them so they can develop a plan to upgrade to one of the TLS-compatible web browsers listed below:

- Internet Explorer version 7 and higher
- Mozilla Firefox version 2 and higher
- Any current Apple Safari version

If you are required to use Microsoft® Internet Explorer 6 due to your Information Technology (IT) Department's policies and restrictions, be aware that version 6 defaults to the SSL security level setting. Enabling TLS compatibility requires a simple setting change in Internet Explorer 6.

To aid you in this effort, we are providing step-by-step instructions for making this change.

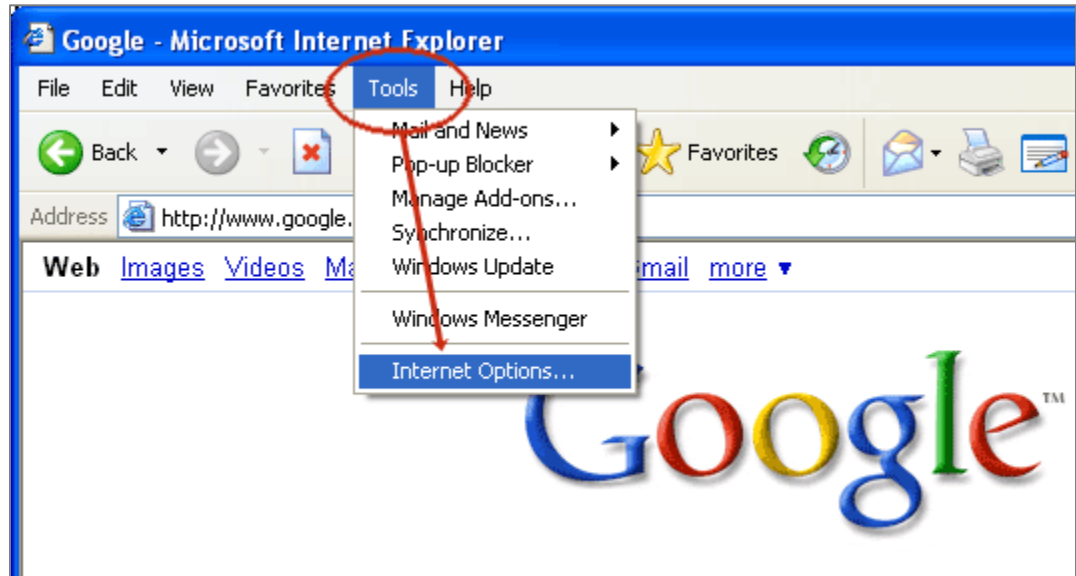
Notes: The specific regulation for "data in motion" can be found in the HITECH regulation 45 CFR Parts 160 and 164 II.B(a)(ii), referencing the requirement to meet a FIPS 140-2 standard of encryption, and NIST Special Publication 800-52, "Guidelines for the Selection and Use of Transport Layer Security (TLS) Implementations," which indicates that TLS is the only such approved protocol.

This security setting must be applied to each instance of Microsoft® Internet Explorer 6.

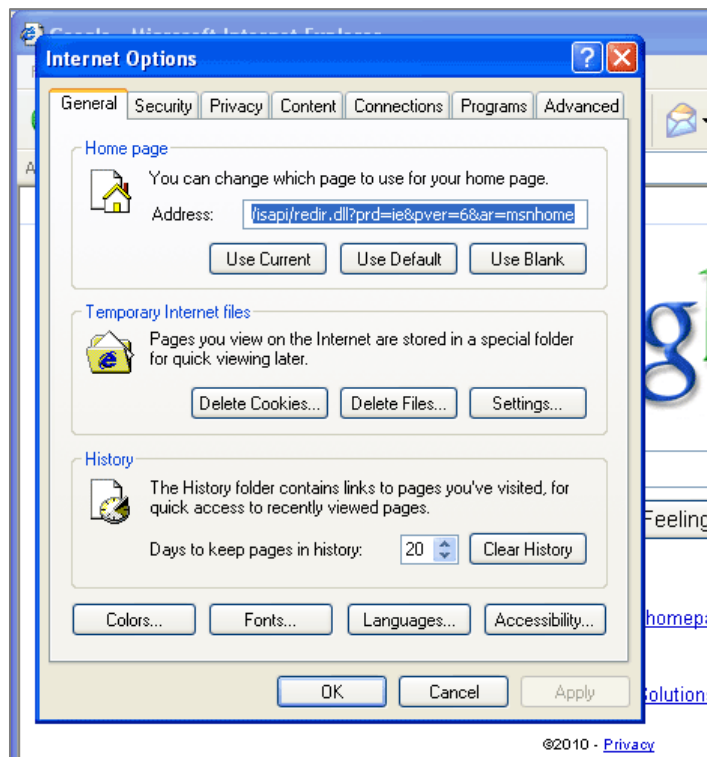
If you think TLS encryption may already have been set for this browser, use steps 1 – 5 in the following procedure to check.

To set TLS encryption in Internet Explorer 6:

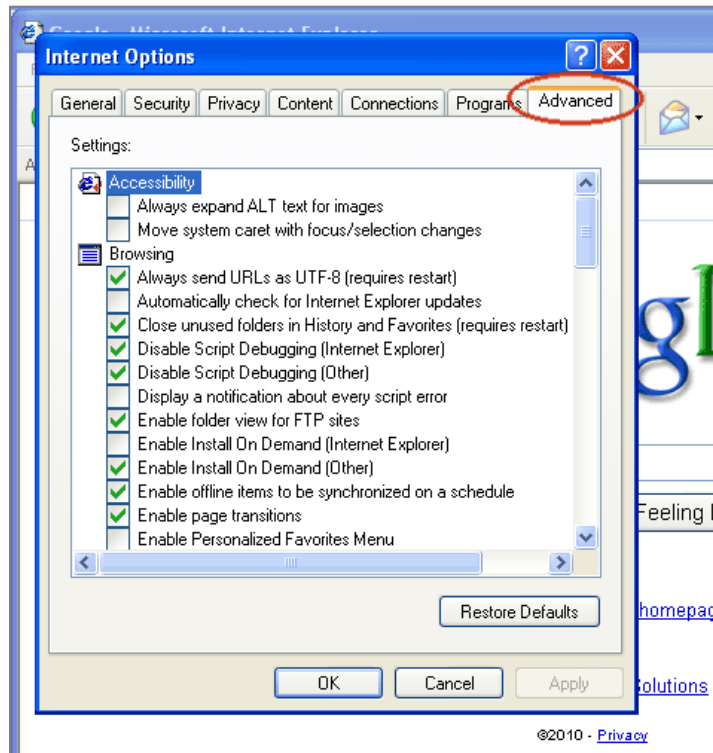
1. Open your Internet Explorer browser.
2. Open the **Tools** menu, and then click **Internet Options**.



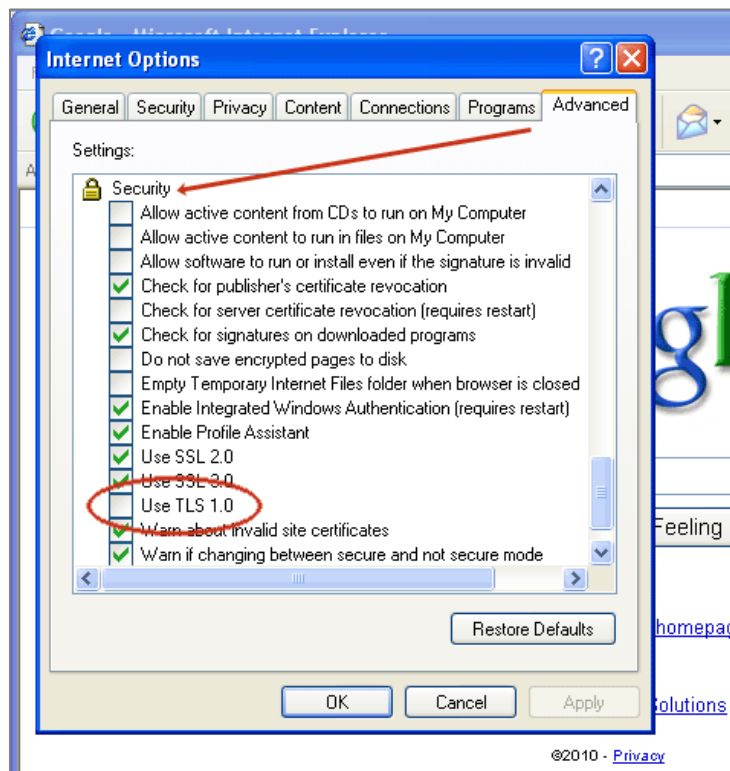
The *Internet Options* dialog box opens.



3. Click the **Advanced** tab.



4. Scroll down until you see the **Security** heading.



5. Select the check box in front of **Use TLS 1.0**.

Note: If the check box is already selected, TLS encryption has already been set for this browser. You can cancel out of this process.

6. Click **OK**.

The dialog box closes.

Your Internet Explorer 6 browser is set up to use TLS encryption.